

THIS DRAWING IS UNPUBLISHED.

RELEASED FOR PUBLICATION

ALL RIGHTS RESERVED.

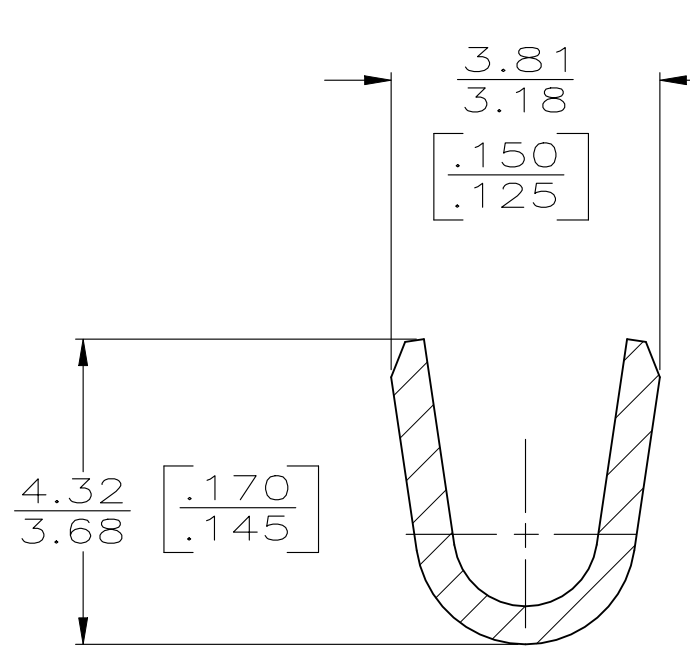
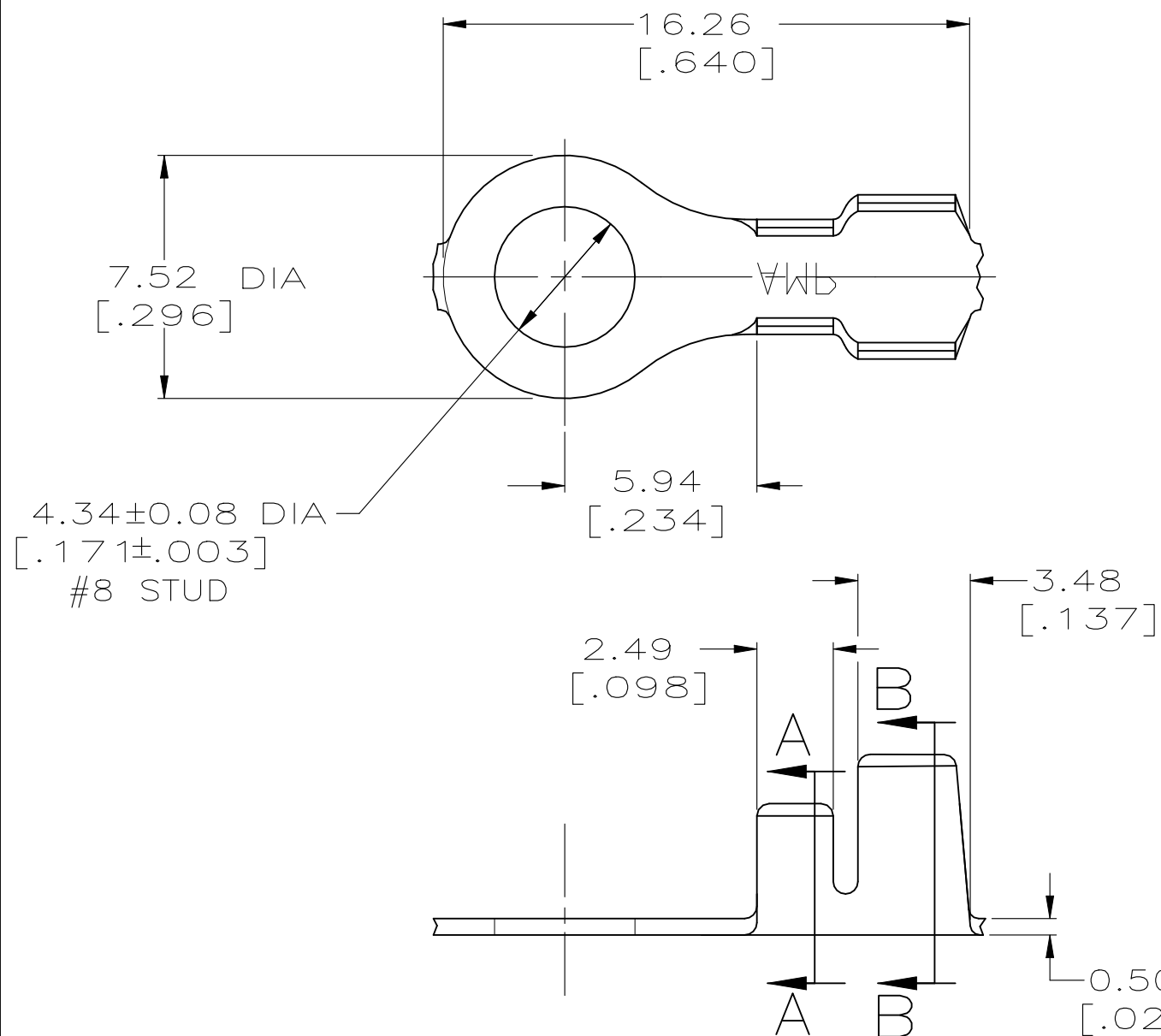
© COPYRIGHT - By -

LOC AF DIST 50

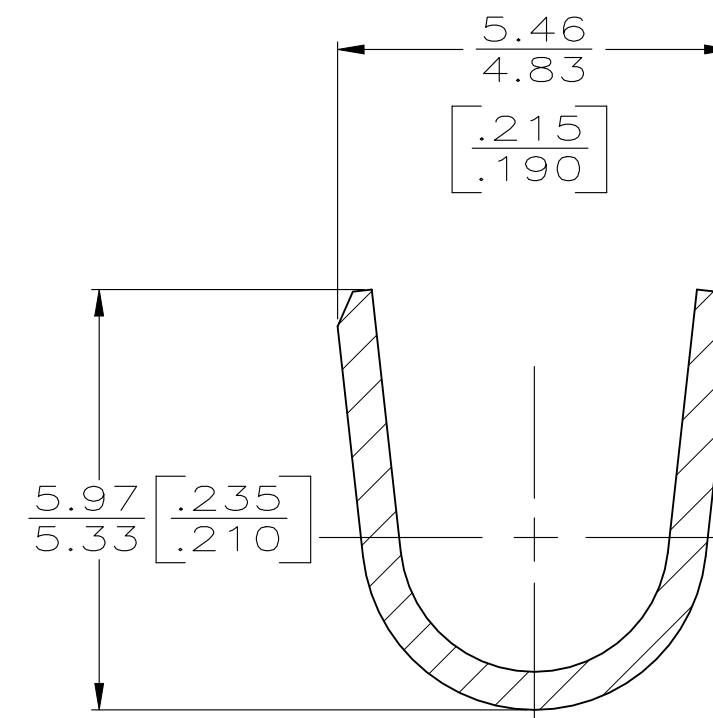
REVISIONS

P	LTR	DESCRIPTION	DATE	DWN	APVD
	S2	REVISED PER ECN-22-13962	28FEB2022	SS	ES

- 1 CONTINUOUS STRIP ON REEL.
- △2 TIN PLATING.
- △3 NICKEL PLATING.
- △4 REELED WITH INTERLEAVING PAPER



SECTION A-A  
SCALE 10:1



SECTION B-B  
SCALE 10:1

FINISH	MATERIAL	INSULATION RANGE	WIRE RANGE	PART NO
△2	082 BRASS	3.05-4.32 DIA [.120-.170]	[18-14] AWG	△4 41332-5
△3	T3 STEEL			41332-1
△2	082 BRASS			41332

TYPE	WIDTH	STRIP LENGTH	TYPE	WIDTH	HEIGHT	WIRE
F OR O	4.57 [.180]	4.06 [.160]	F	3.05 [.120]	1.96 [.077] [14] 1.73 [.068] [16] 1.60 [.063] [18]	
INSUL BARREL CRIMP		±0.38 ±[.015]	WIRE BARREL CRIMP		±0.051 [±.002]	

THIS DRAWING IS A CONTROLLED DOCUMENT.

DIMENSIONS: INCHES

TOLERANCES UNLESS OTHERWISE SPECIFIED:

0 PLC ± -  
1 PLC ± -  
2 PLC ± 0.25 [.010]  
3 PLC ± -  
4 PLC ± -  
ANGLES ± -

MATERIAL SEE TABLE

FINISH SEE TABLE

DWN P FORTNEY 7/22/91  
CHK MS FEHER 8/8/91  
APVD G YETTER 8/12/91

**STE** TE Connectivity

PRODUCT SPEC  
APPLICATION SPEC

NAME RING

SIZE A3 CAGE CODE 00779 DRAWING NO C-41332 RESTRICTED TO -

WEIGHT -

CUSTOMER DRAWING SCALE 5:1 SHEET 1 OF 1 REV S1