

**M/A-COM Technology Solutions Inc.**

1500 Hughes Way, Suite C-100

Long Beach, California 90810

+1 (310) 320-6160

www.macom.com



Partners from RF to Light

<b>PCN Number:</b> PCN-00925		<b>PCN Date:</b> September 30 <sup>th</sup> , 2016
<b>Title:</b> shipping folder change		
<b>Proposed first Ship Date:</b> November 30 <sup>th</sup> , 2016		<b>Estimated Sample Availability Qualification Completion:</b> September 2 <sup>nd</sup> , 2016
<b>Proposed last Ship Date:</b>		
<b>Change Classification:</b> Major <input type="checkbox"/>		Minor <input checked="" type="checkbox"/>
<b>Change Type:</b>		
Assembly Site <input type="checkbox"/>	Design <input type="checkbox"/>	Electrical Specification <input type="checkbox"/>
Test Site <input type="checkbox"/>	Assembly Process <input type="checkbox"/>	Mechanical Specification <input type="checkbox"/>
Test Process <input type="checkbox"/>	Assembly Materials <input type="checkbox"/>	Packing/Shipping/Labeling <input checked="" type="checkbox"/>
<b>PCN Details</b>		
<b>Description of Change:</b>		
Shipping folder (old MACOM P/N <b>ZZ00000287</b> , new MACOM P/N <b>PT-0009103</b> ) change for some of the MACOM power transistor products.		
<b>Reason for Change:</b>		
The new shipping folder will provide better protection against parts dislodging during transit and the likely resultant mechanical damages.		
<b>Products Affected:</b>		
<b>MACOM Part Numbers:</b> See attached list on the next page(s).		
<b>Anticipated impact on Fit, Form, Function:</b>		
The new shipping folder has passed first article inspection, drop test, and ESD evaluation and is deemed suitable for MACOM power transistor products and will have no effect in the form, fit, function, or reliability of MACOM power transistor products affected by this change. Please refer to attached test results for details.		
<b>Changes to product identification resulting from this PCN:</b>		
See attached Appearance and Drawing of New Shipping Folder vs. Existing One.		
<b>Material Declaration updated due to this change:</b>		Yes <input type="checkbox"/> No <input checked="" type="checkbox"/>

**M/A-COM Technology Solutions Inc.**

1500 Hughes Way, Suite C-100

Long Beach, California 90810

+1 (310) 320-6160

www.macom.com



*Partners from RF to Light*

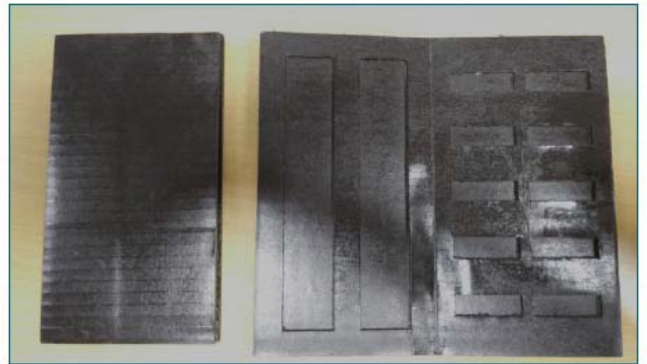
**MACOM Part Numbers Affected by This Change**

<b>Affected MACOM Products</b>	<b>Description</b>
DU28200M	Transistor,Mosfet,200W,28V,2-175MHz
MAPHST0065	Transistor,150W,100-500MHz,28V
MRF141G	Transistor,275MHZ,28V,300W,Mosfet
MRF151G	Transistor, Mosfet,<175MHz,50V,300W
MRF175GU	Transistor,<150MHz,28V,150W,TMOS
MRF175GV	Transistor,200W,<225MHz,28V
MRF176GU	Transistor,200W,<225MHz,50V
MRF176GV	Transistor,150W,<500MHz,50V
MRF275G	Transistor,<500MHz,28V,150W
SRF3943-2	Transistor,<175MHz,50V,300W
SRF4131	Transistor,<225MHz,28V,200W,TMOS
UF28100M	Transistor,Mosfet,100W,28V,100-500MHz
UF28150J	Transistor,Mosfet,150W,28V,100-500MHz

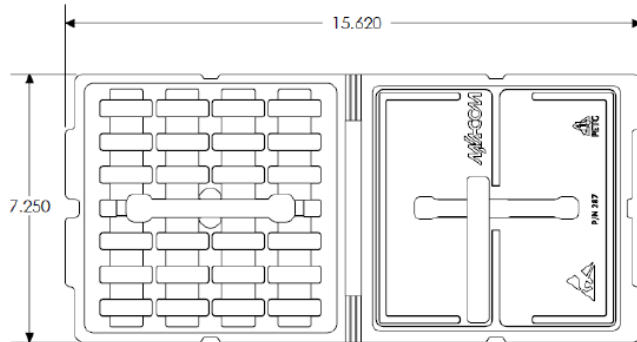
**Appearance and Drawing of New Shipping Folder vs. Existing One**



**Current Design**

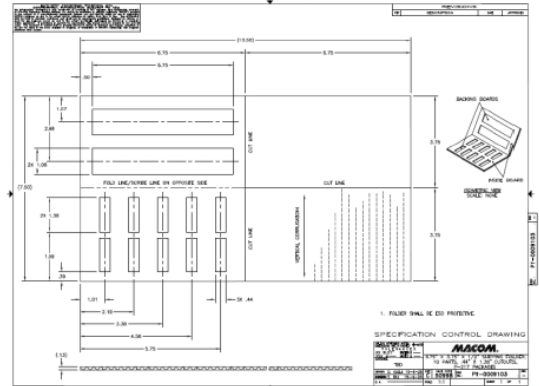


**New Design**



**Current Design**

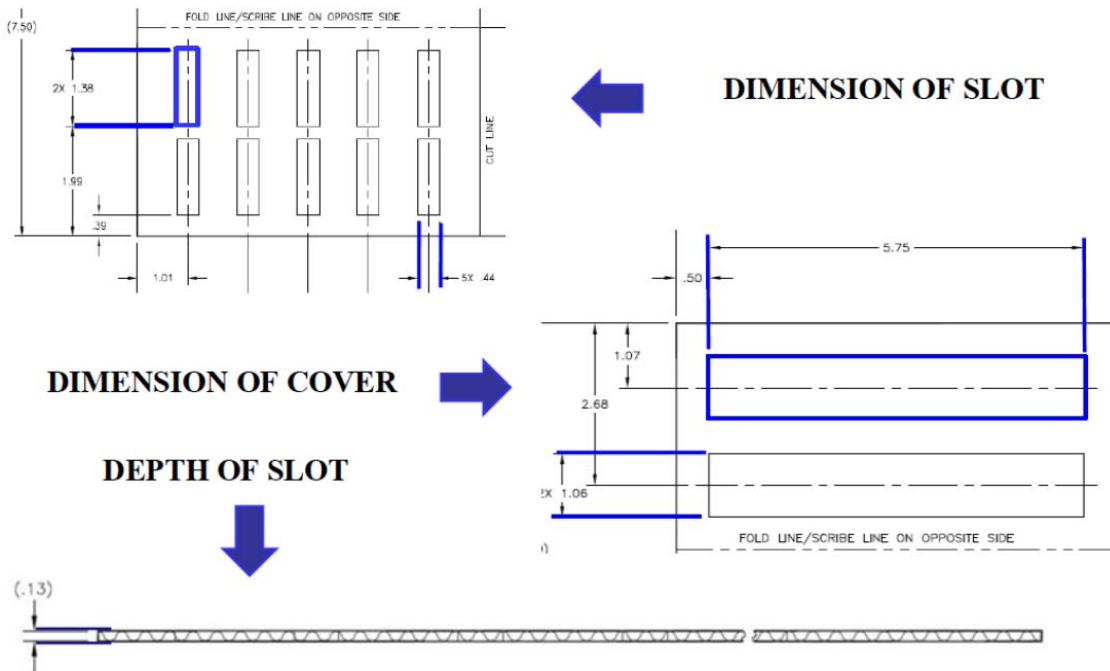
The drawing packing tray part number PT-0009103



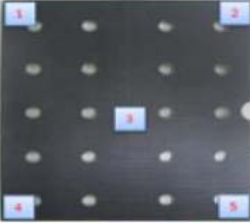


**New Design**

**New Shipping Folder First Article Inspection Result**

ITEM	DIMENSION OF SLOT (inch)			DIMENSION OF COVER (inch)		
	Width (0.44±0.01)	Length (1.38±0.01)	Depth (0.13±0.01)	Width (1.06±0.01)	Length (5.75±0.01)	Depth (0.13±0.01)
1	0.43	1.39	0.14	1.07	5.76	0.13
2	0.44	1.38	0.13	1.07	5.75	0.14
3	0.43	1.38	0.13	1.07	5.74	0.13
4	0.44	1.39	0.13	1.07	5.75	0.13
5	0.44	1.39	0.12	1.06	5.74	0.13
6	0.44	1.39	0.13	1.07	5.76	0.13
7	0.45	1.39	0.14	1.07	5.75	0.14
8	0.44	1.38	0.13	1.07	5.74	0.14
9	0.45	1.39	0.13	1.07	5.75	0.12
10	0.45	1.39	0.13	1.07	5.75	0.13

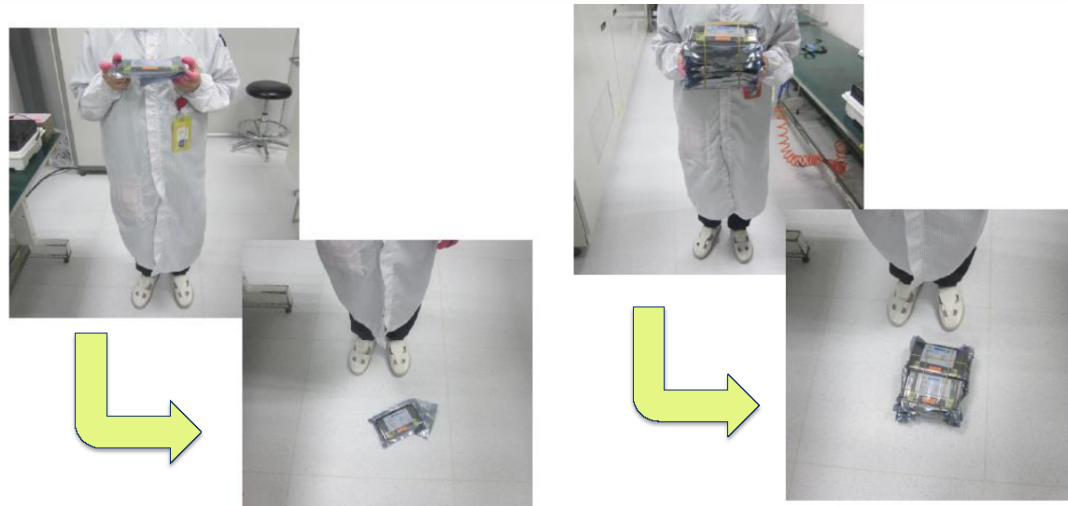


**ESD Evaluation of New Shipping Folder**

<b>P/N# 1000007741</b>		<b>Less than 100 volt/inch</b>					
	<b>Tray #</b>	<b>Point# 1</b>	<b>Point# 2</b>	<b>Point# 3</b>	<b>Point# 4</b>	<b>Point# 5</b>	
	1	30	50	30	40	50	
	2	50	40	50	50	40	
	3	50	60	60	60	50	
<b>P/N# PT-0009103</b>		<b>Less than 100 volt/inch</b>					
	<b>Tray #</b>	<b>Point# 1</b>	<b>Point# 2</b>	<b>Point# 3</b>	<b>Point# 4</b>	<b>Point# 5</b>	
	1	20	20	10	10	10	
	2	30	30	10	10	10	
	3	20	10	10	10	10	
<b>P/N# PT-0009103</b>		<b>Less than 100 volt/inch (Clean wipe then measure surface resistance )</b>					
	<b>Tray #</b>	<b>Point# 1</b>	<b>Point# 2</b>	<b>Point# 3</b>	<b>Point# 4</b>	<b>Point# 5</b>	
	1	40	50	10	20	10	
	2	40	40	20	10	20	
	3	50	20	10	40	20	

### Drop Test Result of New Shipping Folder

1. Put the parts into tray and close with cover.
2. Wrap with the rubber and bubble sheet.
3. Drop test height 80 cm. Drop test 3-times on hard floor on hard floor.
4. After drop test, open the cover tray and inspect tray and units



- Tray are not damage.
- The parts not movement and not bent lead.

**So this tray was passed “ Drop test “ and protect parts movement and bent lead**

